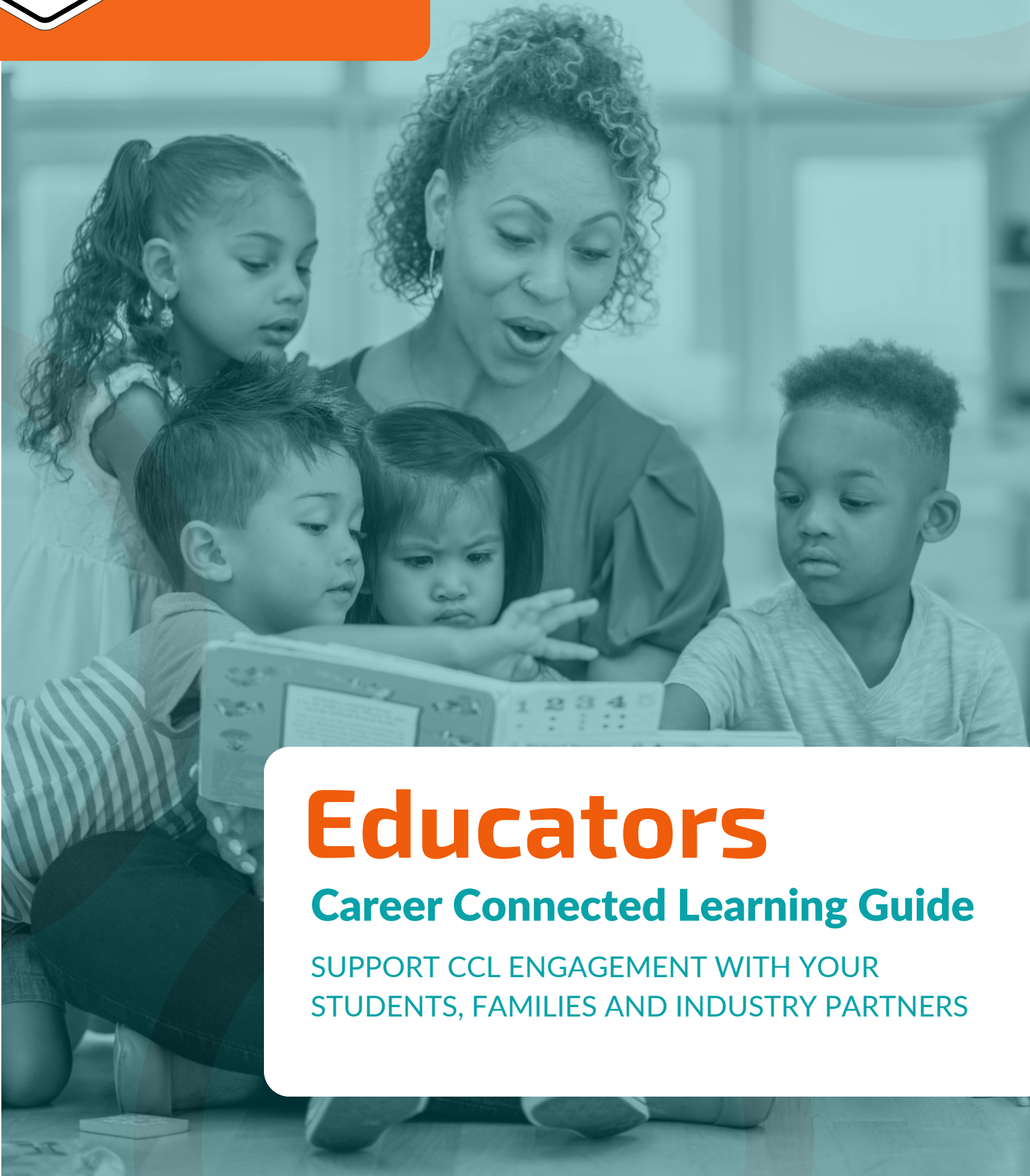




OREGON CAREER  
CONNECTED LEARNING  
RESOURCE HUB



# Educators

## Career Connected Learning Guide

SUPPORT CCL ENGAGEMENT WITH YOUR  
STUDENTS, FAMILIES AND INDUSTRY PARTNERS



# Contents

## Overview

---

Welcome Letter	03
What is CCL?	04

## Framework

---

Four Domains	05
Key Experiences	06
Essential Questions	07
Learning Outcomes	08
K-12 Scope and Sequence	09

## CC Resource Hub

---

Activity Guide	10
Lesson Plans	11
Student Guides	12
Additional Resources	13
Connect by Region	14
Contributors	15

# DEAR EDUCATORS,

**IMAGINE for a moment** that every student in Oregon is taking classes that inspire their curiosity. Every youth is drawing on their own interests in the present and dreams for their future as they engage in their learning. Where might that path lead? Oregon's youth need learning experiences in school that excite, engage and include them. In particular, Oregon's historically marginalized and underserved youth need to see their future path within Oregon's education system. Schooling should not be disconnected from their communities nor detached from students' aptitudes or interests.

**Career Connected Learning (CCL)** creates pathways for all youth to prepare for their best possible futures. This approach to learning brings together educators, community partners, industry leaders, and parents to engage youth of all backgrounds and provide learning opportunities that connect with their interests, life experience, and aspirations for their futures. Career Connected Learning brings value to education such as:

- **CCL adds relevance to education.** From Pre-K through post-secondary school, CCL invites students into awareness, exploration, preparation, and training (including 'work-based learning') that connects learning to dreams, aspirations, communities, and careers.
- **CCL ensures instruction with purpose.** Through a unified approach, CCL brings together an array of efforts to discover and build on the interests of youth while giving them a meaningful connection to academic learning, a foundation from which they will apply their education to questions, challenges, and opportunities they care about.
- **CCL honors the diversity of communities.** It places people's experiences—past, present, and future—into a collaborative path of growth. Since CCL is fundamentally about youth in community, it provides the kind of culturally responsive instruction where all youth can engage and thrive.
- **CCL happens every day and everywhere.** Now is the time for us to intentionally and strategically infuse the education of youth with relevant learning experiences.

We hope that this guide and the resources within support your work as an Oregon educator so that you can:

- Become conversant and comfortable in finding and connecting with student interests and aptitudes.
- Engage communities in building collaborative, community-driven learning.
- Increase the involvement of community members as authentic partners in education as speakers, internship providers, after school partners and summer providers.
- Share resources across regions and initiatives to increase authentic partnership.
- Reduce barriers for all students to participate in career connected learning.

Our vision for the future of Oregon youth is to provide the most engaging and relevant experience possible to find meaningful context and inspiration for their futures. Now, more than ever, we must connect the interests, aptitudes, and dreams of every Oregon youth to their education.

Sincerely,  
The CCL Resource Hub Team  
[www.careerconnectoregon.org](http://www.careerconnectoregon.org)



# CCL PARTNERS

Career Connected Learning (CCL) is an ecosystem of partners working together to help all Oregon students create a vision for their future.



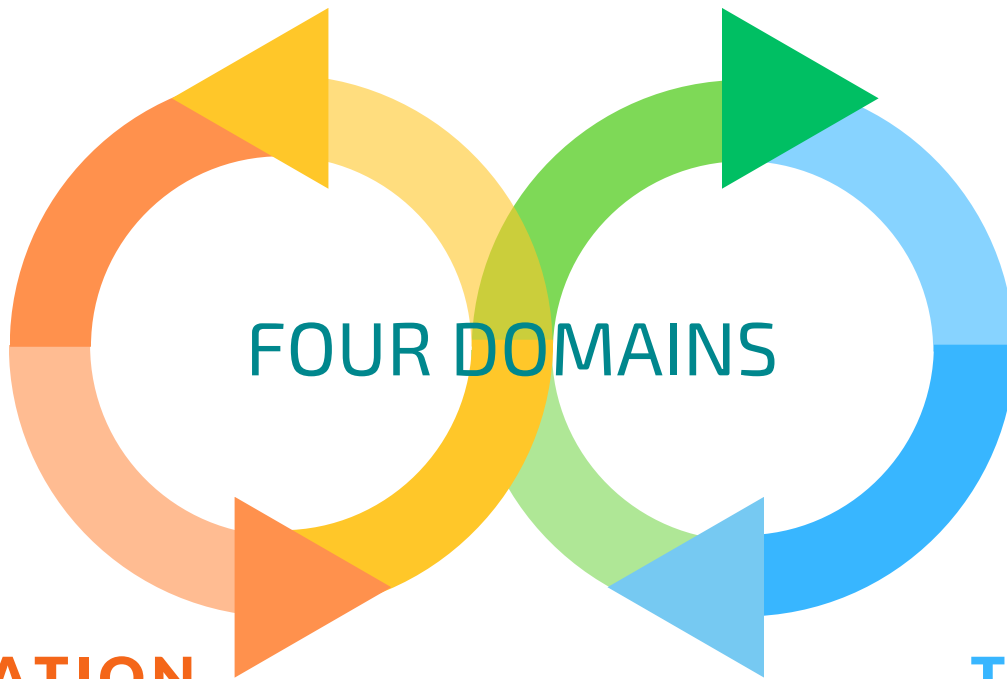
Career learning develops over the course of one's lifetime. Career connected learning is a framework of awareness, exploration, preparation and training.

## AWARENESS

Learning About Work

## PREPARATION

Learning Through Work



## EXPLORATION

Learning For Work

## TRAINING

Learning At Work



Ensures purposeful instruction and engages diverse communities in building collaborative, community-driven learning.

## AWARENESS

### Learning About Work

- Interest & Assessment
- Guest Speakers
- Job Research
- Career Day

## PREPARATION

### Learning Through Work

- Cooperative Work Experience
- School-Based Enterprise
- Workplace Simulation
- Service Learning



## EXPLORATION

### Learning For Work

- Career Fairs
- Job Shadows
- Workplace Tours
- Classroom Simulations
- Informational Interviews

## TRAINING

### Learning At Work

- Internships
- Clinical Experiences
- On-the-job Training
- Registered Pre-Apprenticeships
- Registered Apprenticeships



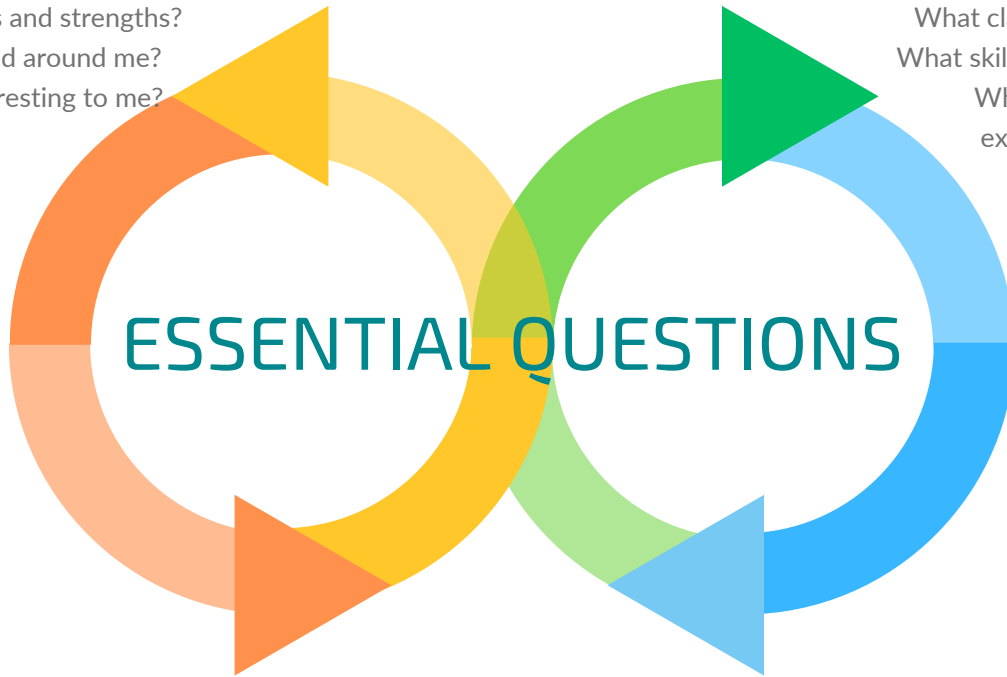
The CCL continuum provides a map for learners to connect their interests, aptitudes, education, and goals to their future.

**AWARENESS OF**  
self, others, and community.

- What do I enjoy? How do I like to learn?
- What are my interests and strengths?
- How do I see the world around me?
- What careers are interesting to me?

**PREPARATION OF**  
skills and planning strategies.

- How do I prepare for a career?
- What classes do I need to take?
- What skills do I need to develop?
- What work-based learning experiences are available?



**EXPLORATION OF**  
strengths and opportunities for growth.

- How many different careers are aligned with my interests?
- How do I develop and expand my unique strengths?
- What skills do I need to pursue my career goals?
- How can I contribute to a better world?

**TRAINING OF**  
career and professional development.

- How do I apply what I have learned?
- How do I continue learning new skills?
- What additional training can I pursue?
- What career options are available to me?



By engaging in career connected learning, students will develop essential skills for success in academics, career and life.

## AWARENESS

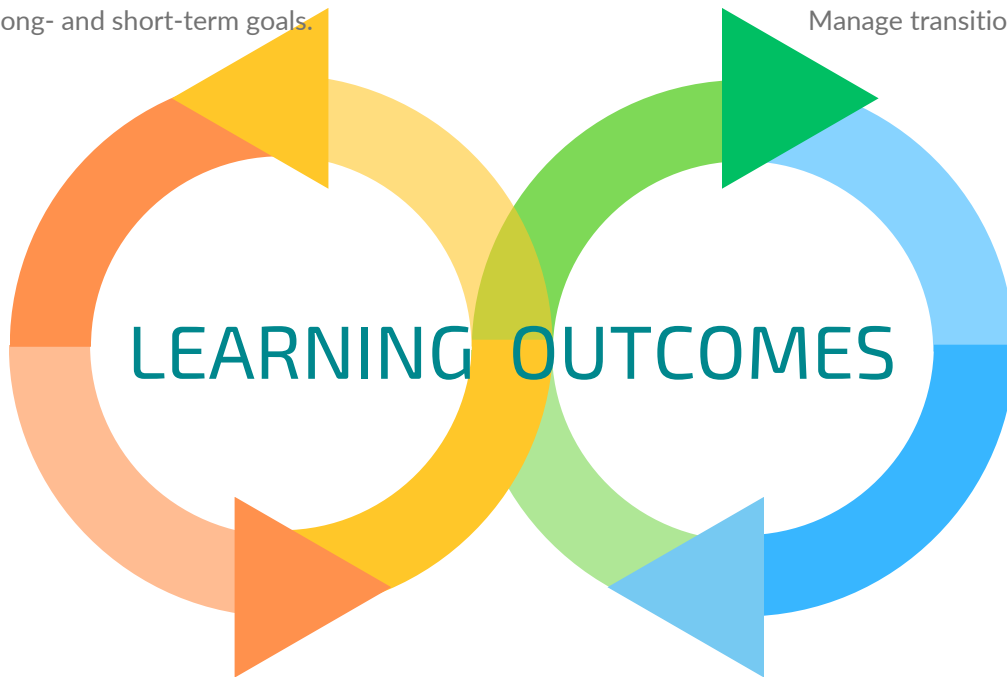
### outcomes

Cultivate effective speaking, writing and listening skills.  
Develop self-motivation and self-direction for learning.  
Persevere to achieve long- and short-term goals.

## PREPARATION

### outcomes

Exhibit maturity and behaviors appropriate to the situation.  
Participate in enrichment and extra-curricular activities.  
Manage transitions and adapt to change.



## EXPLORATION

### outcomes

Set academic, career, social and emotional goals.  
Balance school, home and community activities.  
Use leadership and teamwork skills within diverse groups.

## TRAINING

### outcomes

Apply effective communication strategies.  
Demonstrate civic and community engagement.  
Develop personal management and teamwork skills.  
Identify and use available educational opportunities.





## 9 Grade Level Example

Career awareness and exploration can happen at any age and any stage for an individual. The pace and flow of career preparation and training may vary depending on student readiness, district programming and community partnerships.

The CCL Domains below are organized by recommended grade levels to provide an example of a K-12 scope and sequence for career development.

# K-12 SCOPE & SEQUENCE



## GRADES K-4

### Career Awareness

- Career awareness activities help students learn about themselves and the world around them.
- Students learn about a wide variety of jobs and imagine how their interests relate to future careers.



## GRADES 5-8

### Career Exploration

- Students continue to develop their interests and appreciate their unique strengths.
- Guided by their interests, students explore a variety of jobs and identify what skills are needed.



## GRADES 9-12

### Career Preparation and Training

- Students continue exploring careers, while learning about opportunities and tools to help with planning.
- Through career research and workplace discovery, students apply learning through hands-on and work-based learning experiences.
- Students develop employability, technical and professional skills. Strategies link educational decisions with career options.

During your school year as conversations with learners take place, consider connecting students to their future by using these Career Connected Learning activities.

## AWARENESS

### Learning About Work

- **Interest & Assessment** — Survey students about their career interests. Students can describe their growing awareness with a KWL chart (What do you know? What do you want to know? What you have learned from this experience?)
- **Job Research** — Structure time for students to research the jobs they are interested in. Students can demonstrate their learning with posters, digital presentations, and short videos to share and enhance one another's knowledge.
- **Guest Speakers** — Invite community leaders and professionals for an in-person or virtual visit to talk about their jobs and industries. Students can research, formulate questions, and explore connections between their new knowledge and existing interests.
- **Career Day** — Plan an in-person or virtual event to showcase local and state industries. Students can synthesize their interests, research, formulate questions, and reflect on how the experience has influenced their learning.

## EXPLORATION

### Learning For Work

- **Career Fairs** — Plan a year-end, in-person, hybrid, or virtual career fair. Draw from student interests and collaborate with community and industry partners. Students can widen their knowledge about regional industries by talking directly with employers.
- **Workplace Tours** — Schedule an in-person or virtual workplace tour. Students can observe the work environment and ask initial questions of employees before a more in-depth informational interview.
- **Informational Interviews** — Encourage students to reach out to professionals who work in their fields of interest. Students can ask questions about people's motivations, academic and career paths, and current projects. Where not possible, students can use video platforms such as [careerjourneys.org](http://careerjourneys.org).
- **Classroom Simulations** — Provide rich simulations within the convenience of the school setting. Students can participate in design and can develop complex problem-solving skills.
- **Job Shadows** — Structure an activity for students to practice communicating with professionals to arrange a field experience. Students can observe their understanding of various professions in the work world.

## PREPARATION

### Learning Through Work

- **School-based Enterprise** — Provide local communities with needed resources by developing a revenue generating, student-run business. Students can gain credit while they learn comprehensive professional skills in a structured and safe environment.
- **Service Learning** — Build bridges between students, families, educators, and community networks by working for and with the local community. Students can research community needs and engage in community-led projects that offer a rich academic base and strong mentorship.
- **Workplace Simulation** — Design hands-on and virtual learning opportunities to reinforce classroom instruction. Students can apply classroom learning to real-world situations, developing their skills, confidence, and connections to resources and professionals outside of the classroom.
- **Cooperative Work Experience** — Place students with academic experiences related to their career interests. Students can gain valuable professional skills and credit with support to grow from mentors at school and work.

## TRAINING

### Learning At Work

- **On-the-job Training** — Offer students comprehensive opportunities to gradually assume responsibility for a wide range of employment tasks. Under supervision, students evaluate and reflect on their progress.
- **Internships** — Develop and maintain programs that offer students paid or unpaid work-based experiences. Students develop problem-solving and professional skills under a greater degree of autonomy.
- **Clinical Experiences** — Organize opportunities for students to develop skills within specific industries. Students learn to perform a series of career-related tasks under direct supervision.
- **Registered Pre-Apprenticeships** — Prepare students from diverse backgrounds to enter and succeed in a registered apprenticeship program. Students can benefit from sustained interaction with professionals in a simulated or real work environment to meet entry requirements.
- **Registered Apprenticeships** — Connect students with paid apprenticeships in their fields of interest. Students can benefit from supplemental classroom education and a structured mentorship.

# TEACHER RESOURCES

## CCL Lesson Plans

On the CCL Resource Hub, you'll discover a wealth of curated curriculum materials, lesson plans, and activities to enhance your teaching practice and inspire enriching learning experiences for your students. Connect with fellow educators from around Oregon, exchange knowledge and insights, and contribute to a vibrant community of passionate professionals. Together, we can create a transformative educational landscape that prepares students for success in the modern world.

**Introduction to Service Learning Lesson Plan**

**OVERVIEW**

This lesson introduces students to the concept of Service Learning, emphasizing its role as a Work-Based Learning experience that ties academic, technical, and employability skills to community needs. By the end of this lesson, students will have a clear understanding of Service Learning, its benefits, and how they can participate effectively.

**OBJECTIVES & GOALS**

- Define Service Learning and differentiate it from general volunteering.
- Describe the importance of connecting Service Learning to their CTE Program of Study.
- Identify potential outcomes and evidence of learning for a Service Learning project.
- Recognize the significance of sustained interaction with professionals in the community.
- Explore various settings in which Service Learning can take place.

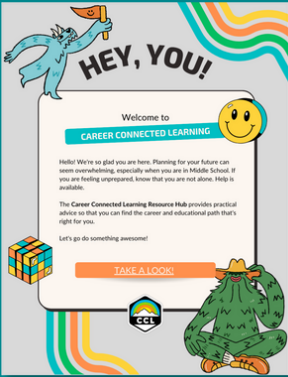
**PREPARATION & MATERIALS**

- Projector or smartboard to display slides.
- Access to the Oregon Department of Education module on Service Learning.
- Pencil, pencils, and notepaper.
- Sticky notes for group activities.
- \*\*\*Optional\*\*\* Samples or case studies of successful Service Learning projects.

# STUDENT GUIDES

## CCL Elementary

What do you like to do for fun? Thinking about what makes you happy can help you find a career you will enjoy. Elementary school is a great time to learn more about yourself. The Career Connected Learning Resource Hub can help you find out more about yourself and cool careers in Oregon.



## CCL Middle School

Let's go do something awesome! Planning for the future can seem challenging, especially when in middle school. Get help at the Career Connected Learning Resource Hub! It provides practical advice and activities for you to create your own career and educational path.

## CCL High School

You are the expert on YOU! Have you ever wondered what else you could be an expert on? High school is a great time to plan, prepare and even train for the future. The Career Connected Learning Resource Hub provides practical tools, so that you can find the career and educational path that feels right for you.



# ADDITIONAL RESOURCES

## CCL Families Guide

Parents, family members, and caregivers have the biggest impact on a child's career choices. This guide offers tips for significant adults in a young person's life to help them make informed and fulfilling career decisions.



## Industry Partners Guide

Preparing young people to succeed in the workplace requires partnering with local schools and engaging in career-readiness activities. Strengthen your partnerships by building career connected learning in your community using this guide.

## ASCA Standards & OARs

American School Counselor Association (ASCA) supports school counselors' efforts to help students focus on academic, career and social and emotional development. Oregon Administrative Rules (OARs) are the educational standards that the Oregon Legislature has determined must be met by all school districts.



**EVERY REGION HAS  
A CCL TEAM READY  
TO SUPPORT YOU!**

## **CONNECT FOR MORE INFORMATION**

- ✓ CTE Regional Coordinators for high schools
- ✓ STEM Hub Directors for K-12+
- ✓ CCL System Navigators for K-12
- ✓ CTE Community College Deans for post-secondary
- ✓ Career and Guidance Counselors at each district



Connect by region at the  
**CCL RESOURCE HUB**  
[www.careerconnectoregon.org](http://www.careerconnectoregon.org)

*Career Connected Learning is a partnership between the Oregon Department of Education and the Oregon Higher Education Coordinating Commission. Design and implementation of this guide and materials by Southern Oregon Education Service District.*

*Thank you to all the contributors who helped bring knowledge and resources to this guide and the CCL Resource Hub.*



**Contact**

**Heidi Lee Harless, CCL Project Manager**

**E-mail**                    [heidi\\_harless@soesd.k12.or.us](mailto:heidi_harless@soesd.k12.or.us)

**Website**                   [www.careerconnectoregon.org](http://www.careerconnectoregon.org)